



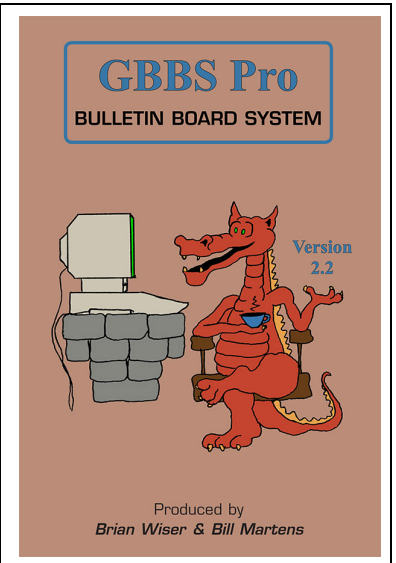
## **GBBS Pro 2.2 Quick Installation Guide**

by Henry Pedro

## **Get the Complete Guide to *GBBS Pro***

Over 240 pages of expanded documentation, tutorials, *GBBS* development history, as well as forwards from Kevin M. Smallwood, Andrew Wells, and experienced BBS sysops.

[www.callapple.org/books](http://www.callapple.org/books)



### **GBBS Pro 2.2 requires the following hardware setup to install:**

- 64K Apple II Plus or 128K Apple IIe, IIc, IIc Plus, or IIGS.
- At least one 5.25" floppy drive or equivalent solid state media.
- At least one "mass storage" device. A 3.5" 800K floppy disk is considered mass storage for the purposes of this installation.
- Super Serial Card, Apple IIc serial port, or various internal modems. GBBS Pro supports popular modem cards such as the Hayes MicroModem, Apple CAT 103 and 212, and the Zoom Modem IIe.

NOTE: GBBS Pro supports the IIc serial port, but this port does not have all the required signals and requires a custom cable. Standard Serial Cables may be used using the "No Carrier SSC Driver" but you may have mixed results.

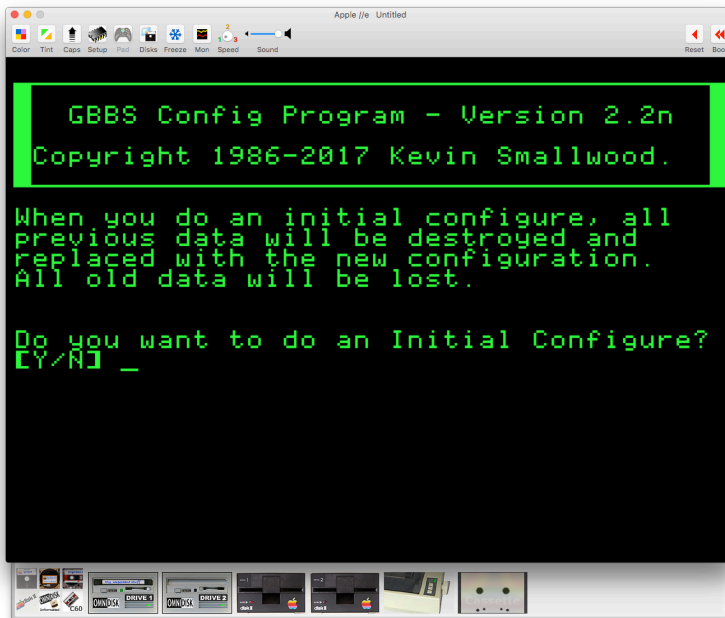
- External modem (if using an SSC, or IIc/IIGS serial port)
- A printer is not required but GBBS Pro supports various configurations including a host of popular serial and parallel port cards and respective printers.
- Although not required, it is highly recommended to have a system clock. GBBS Pro supports various clock add-ons like the Applied Engineering Timemaster II H.O., Thunderclock (and compatibles), and SMT's popular "No Slot Clock."

## **Installation**

You will need a formatted ProDOS volume of at least 800K in order to successfully install GBBS Pro.

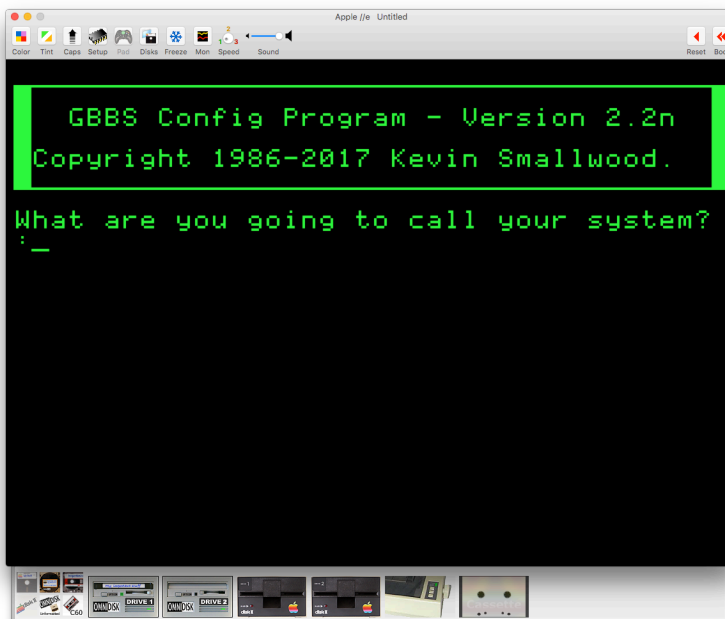
1. Insert the diskette labeled "CONFIG" into your 5.25" disk drive and boot the computer. If you have a second 5.25" diskette, insert the disk labeled "SYSTEM".

2. You will be greeted with the following screen:



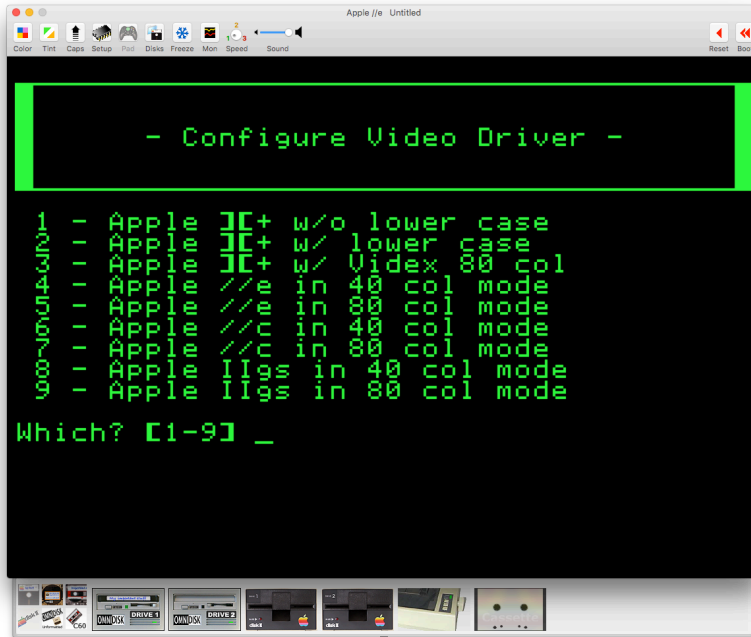
3. Press Y to start a new installation.

4. The installation program will then show you the following screen:



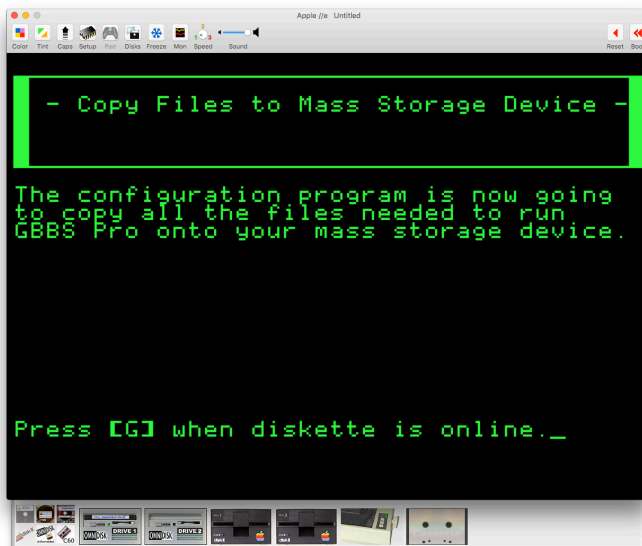
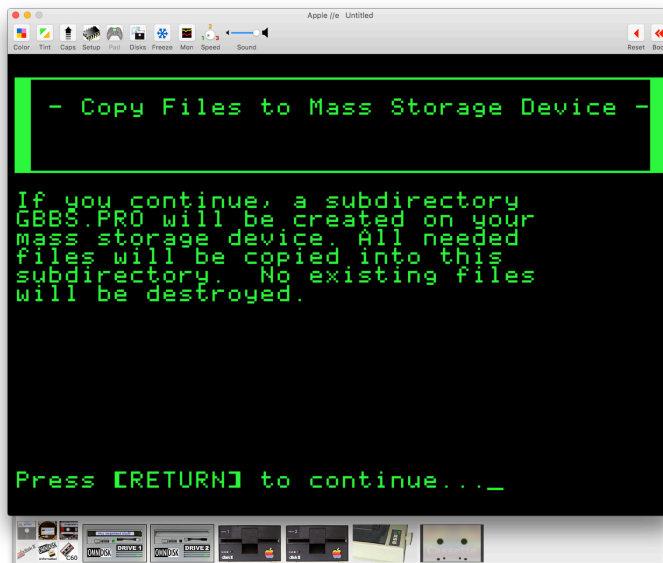
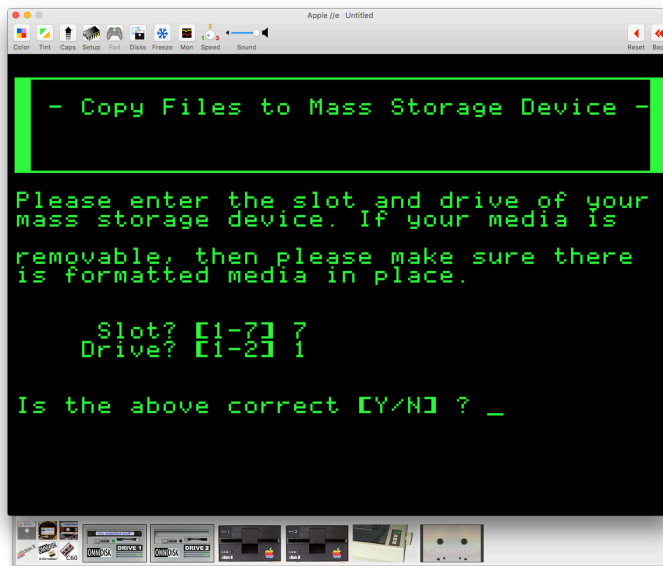
5. Answer all the prompts in sequence. The installation program will ask you for the following information:
- You BBS's name.
  - Your full name (this information will be displayed as the SYSOP name when a user logs in to your system)
  - Your BBS's telephone number.
  - Your city and state/province.
  - A 4-8 character password for your SYSOP account
  - A 4-8 character password for your SYSOP account to be used when you are logging into your system remotely.

6. The installation program will then review the information so that any corrections can be made before proceeding.
7. When you continue, the installation program will display the following screen:

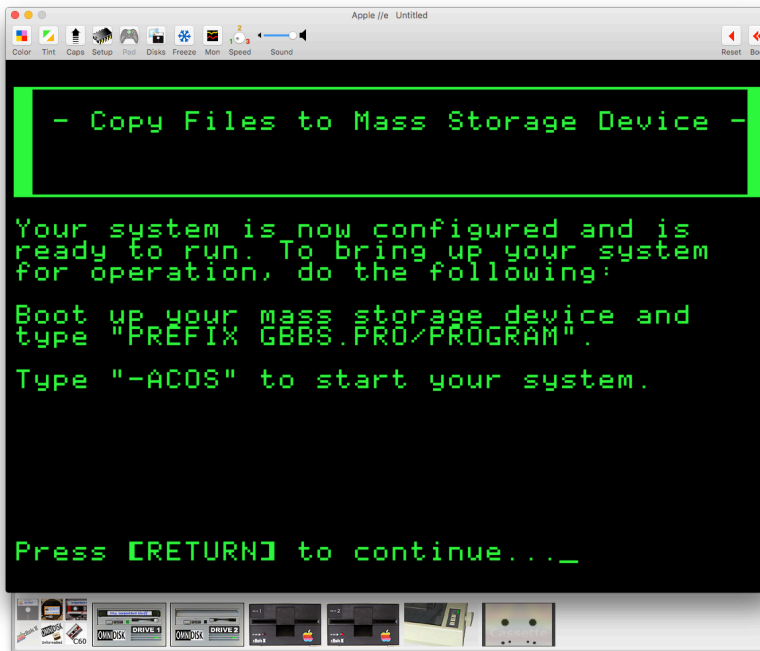


8. Enter your video preference.
9. The installation program will then ask for your modem / serial card information, your specific type of modem (You will have an opportunity to edit the modem initialization strings if you are using Hayes or US Robotics compatible "AT" command set modems.), your printer interface and printer, if installed, and your system clock information.
10. Enter all the information as accurately as possible. If you modify your hardware configuration you can change the corresponding software configuration later.
11. At this point, the installation program will ask you to insert your pre-prepared mass storage device and tell the installation program in which slot and drive it is located.

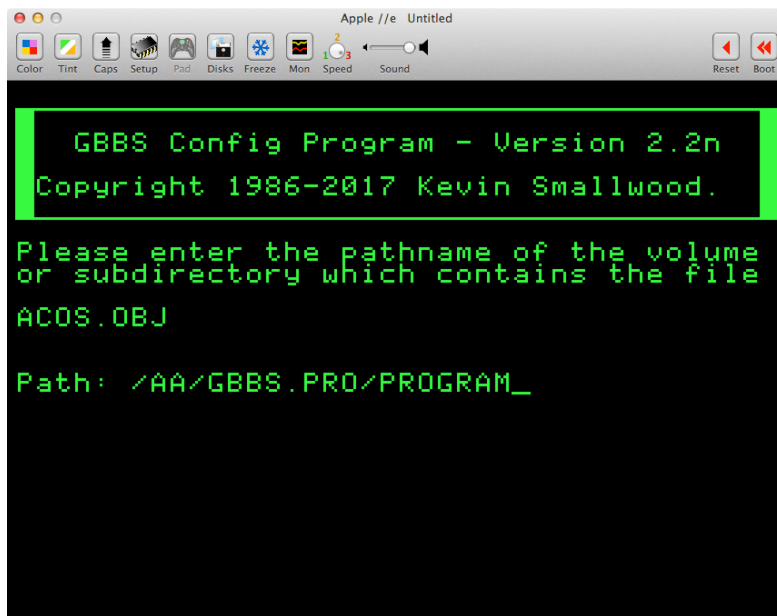
12. The following screens will be displayed:



13. The installation program will now create a subdirectory on your mass storage volume called /GBBS.PRO/ and copy all the required GBBS files into it. When it is finished you will see the following screen:

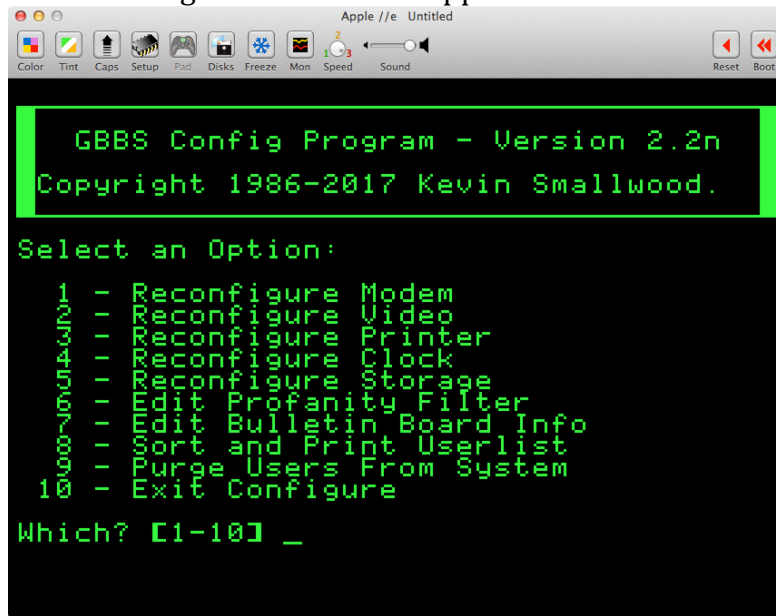


14. Your BBS system is now ready to run, but before you continue, you should re-run the installation program. Due to a small bug in the installation program, one of the storage volumes is not properly defined, and should be modified.
15. Re-boot the disk labeled GBBS Pro CONFIG. When you are prompted to do an initial configure, press "N". You will then see the following screen:



16. Enter the ProDOS pathname of your mass storage device where your GBBS installation resides, specifically, the file ACOS.OBJ.

17. The following screen will then appear:



```
Apple //e  Untitled
Color  Tint  Caps  Setup  Pad  Disks  Freeze  Mon  Speed  Sound  Reset  Boot

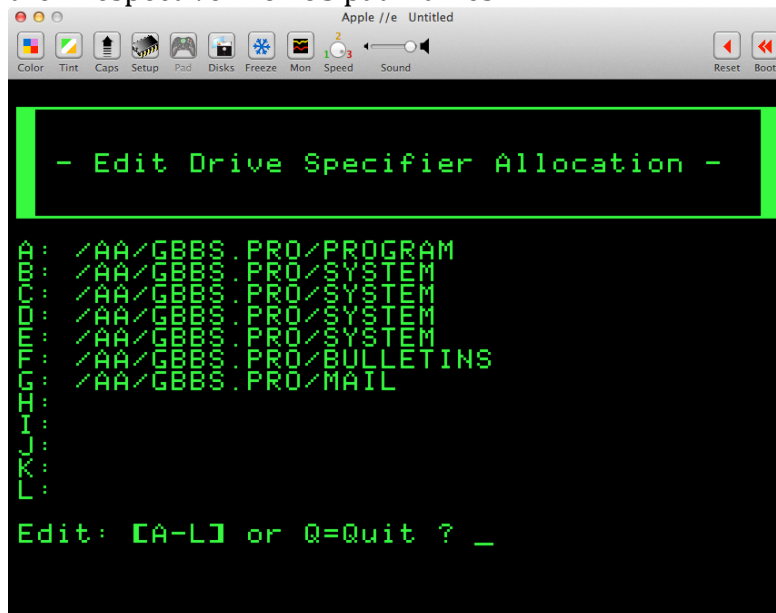
GBBS Config Program - Version 2.2n
Copyright 1986-2017 Kevin Smallwood.

Select an Option:

1 - Reconfigure Modem
2 - Reconfigure Video
3 - Reconfigure Printer
4 - Reconfigure Clock
5 - Reconfigure Storage
6 - Edit Profanity Filter
7 - Edit Bulletin Board Info
8 - Sort and Print Userlist
9 - Purge Users From System
10 - Exit Configure

Which? [1-10] _
```

18. Select #5: Reconfigure Storage. A list of virtual storage “devices” from A: to L: will appear, with their respective ProDOS pathnames:



```
Apple //e  Untitled
Color  Tint  Caps  Setup  Pad  Disks  Freeze  Mon  Speed  Sound  Reset  Boot

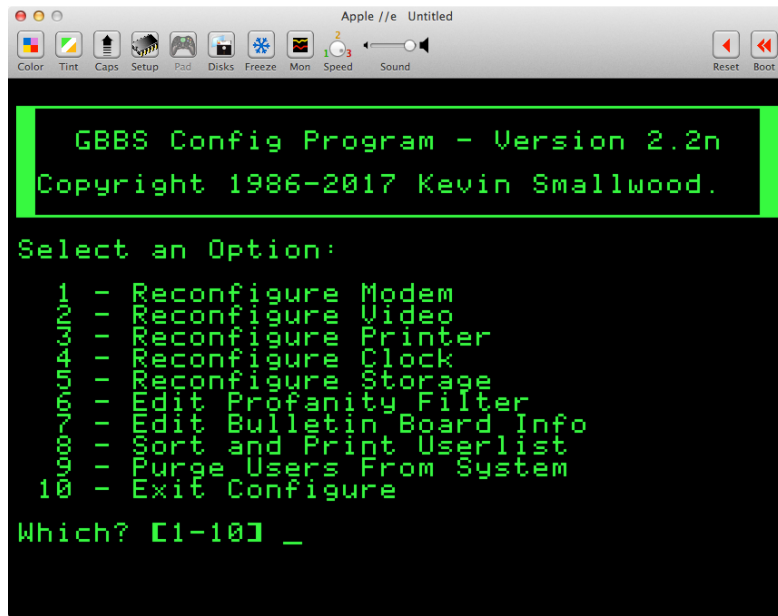
- Edit Drive Specifier Allocation -

A:  /AA/GBBS.PRO/PROGRAM
B:  /AA/GBBS.PRO/SYSTEM
C:  /AA/GBBS.PRO/SYSTEM
D:  /AA/GBBS.PRO/SYSTEM
E:  /AA/GBBS.PRO/SYSTEM
F:  /AA/GBBS.PRO/BULLETINS
G:  /AA/GBBS.PRO/MAIL
H:
I:
J:
K:
L:

Edit: [A-L] or Q=Quit ? _
```

19. The GBBS installation program incorrectly configures virtual drive C:. Select “C” and change the ProDOS pathname to /xx/GBBS.PRO/GFILES. Then press “Q” to quit, and confirm your selection.

20. You will then be returned to the main installation screen.



21. Select 10 to quit, and then you can start your GBBS Pro BBS.